

# ELFIN

**OWNERS and DRIVERS CLUB Inc.**

# NEWSLETTER



**NUMBER 140 - March 2016**



REGISTERED BY AUSTRALIA POST PUBLICATION NUMBER VBH-4024

## ELF – IN



❖ Small, slight, and delicately - made or proportioned, quick, agile and delicate ( as in movement or thought ), having an otherworldly, unearthly or magical quality.

- Webster's Dictionary.



# ELFIN OWNERS and DRIVERS CLUB Inc.

## EDITORIAL:

Well done to all those members who attended to their membership renewals so promptly, many before Christmas. By now you will have received your 2016 EODC membership card which is your receipt as well as your club card required when you enter for a race meeting. Also, our merchandise sales were brisk over the holiday break – we still have plenty of supplies, so if you have a special occasion coming up rush your orders to Cheryl. Just one thing – make cheques payable to the EODC, not me personally in case I'm tempted to take off to the French Riviera!

There are lots of "warm fuzzy" stories enclosed to get our new year off to a flying start, and we report on the great deeds of several of our members who continue to fly the Elfin flag with distinction. **JOHN BOWE** rates a special mention for reasons you will read.

Of course, life isn't always a bed of roses, and things have not been so good for some. Also, we lost one of our esteemed life members in late January. A number of tributes follow and a card was sent to the family on behalf of the EODC.

It's that time of year again when we announce our EODC Clubman of the Year. Who will it be for 2015?

Our March issue traditionally comes your way in February in order for you to make arrangements to attend our annual Grand Prix barbeque. This is our first major event for 2016 and as usual will be held at the Elfin Heritage Centre in Moorabbin on the Friday night of the Formula One carnival (March 18). To assist with catering it is important you book for this one so contact **CHERYL** on 0419 581 815 (email reidywithchampers@yahoo.com.au), Don't annoy **BILL HEMMING** at the Elfin Heritage Centre – he has enough to do putting up with us! Remember the night is free for current financial members (\$20 for guests).

Another major event coming up is our Elfin display at Albert Park during the Formula One GP carnival (March 17-20). We are currently working on our list of display cars (we need 12), and if you would like to make enquiries contact our display coordinator **MIKE BARKER** on 0407 825 545.

Also a reminder that many members have not sent in a photo of their car for inclusion in our club register. Even if you have submitted something in the past another one won't go astray. This is a very important part of your membership so please go to it and send your pics to me at PO Box 447, Aireys Inlet, Vic. 3121 or email a digital copy to Cheryl at reidywithchampers@yahoo.com.au. Action shots are preferable, but static photos are fine.

Good luck for 2016 and let's enjoy our Elfins.

Brique



### EODC DIRECT CREDIT DETAILS

Bank Account No. 5003785

BSB 633-000

Bendigo & Adelaide Bank

Make sure your **NAME** appears on the transaction so your payment can be identified.



# ELFIN OWNERS and DRIVERS CLUB Inc.

## BITS 'N' PIECES:

**DANIEL BANDO** sent us this report....

"Thanks for the recent write up in the newsletter about competing in Sandown. I really enjoyed myself. That little Elfin is 'superb' and I have now competed in 20 odd race meetings since purchase in Nov 2009. I tried hard all weekend and broke the Vee lap record in race 3 of the meeting. There is a lot more time to knock off that, but being my first time at Sandown I was pretty happy. Three weeks later and I competed in the Formula Vee 50th year celebration at SMSF. I managed to finished 4th outright from over 25 cars starting on the Saturday, after a poor qualifying position of 8th. Luc Botton managed to get his Elfin NG in the top 3 for all four races." *Thanks, and well done, Daniel!*

At the 2015 Historic Sandown **TIM WRIGHT** won the group M sports Lex Davison Tribute event in the Elfin Mallala. Tim had been chasing Tony Burrage in the Rennmax 23B in the previous races and finally found an opportunity in the final race. Not only was this Tim's first win in a motor race but possibly the first time an Elfin Mallala has won a Group M sports car race for many years.

"Great newsletter as usual", says **BILL ATHERTON**, " and many thanks for the pic and mention of my old Elfin. Had a great call from Brian Morrell this week who was the first owner, and the Mallala who was behind me in this photo (at right) from SDpics.com coming into the old Peters corner. He's quite a character and has a few stories to tell about his Elfin days. I am looking forward to catching up with in him Melbourne next year and hope to have an article for you on his early days with **GARRIE** and his early Streamliner and the Mallala....

.... And thanks **BRIAN** for convincing me to stay around at last week's Rob Roy. Our old Streamliner managed to win the 1941-1960 sports car class last year and although we only got one hot run, you were right. We cracked the class win again this year. It was great to represent the EODC with a gong for the pre 1960 class and **MIKE BARKER** to win the Clubman class and the Tony Gaze Trophy.



At the 2016 RACV 'Great Australian Rally' to Mornington on January 17 the 'Best Club Exhibit Award' was won by the Veteran Car Club of Australia. The club then nominated the rare and magnificent veteran Nazarro of **JOHN ANDERSON** as the outstanding car of the exhibit. The Nazarro won the famous Targa Florio road race in 1913, and again in 1920, and John would dearly love to take his rare veteran to Sicily where, no doubt, it would be a sensation.

It obviously caused a sensation at the 'Great Australian Rally' closer to home. Well done, John!

The opening round of the 2016 Nature's Organics Victorian Hillclimb Championship was held at Rob Roy on Sunday 24<sup>th</sup> January and attracted 84 competitors. Former Clubman of the Year winner, Elfin AGP display coordinator and hillclimb ace **MIKE BARKER** staged a thrilling battle for outright honours, finishing just short by .42s for fastest time of day. On this occasion, Mike drove his Hayward hillclimb special instead of his very quick Type 3 Elfin Clubman. Congratulations, Mike!



To all those members who posted off their membership renewals before the end of 2015. I was able to send off 100 new cards before the postal cost increases.



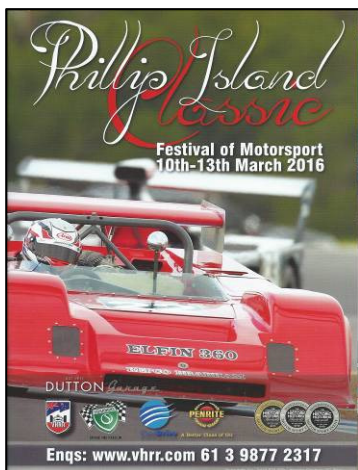
# ELFIN OWNERS and DRIVERS CLUB Inc.

## BITS 'N' PIECES:

Still on hillclimbing - one of the long gone venues in NSW was Silverdale. **JOHN STEWARD** lives only three kms. away and describes the location as "God's own country". Silverdale was a popular location back in the 1960s and '70s, but the urban sprawl brought about its closure early in the 1980s. A similar fate befell Templestowe in Victoria and the NSW motor race circuits of Oran Park and Amaroo Park. Sadly the only evidence of hillclimbing at Silverdale is the old ticket booth which is falling into disrepair.

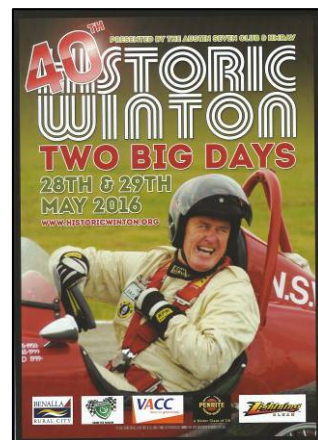
One of our members who enjoyed success overseas as a racing driver was **JOHN AMPT**. John's career with Jack Brabham's organisation was cut short after an unlucky accident, and he returned to Australia where he continued racing during the 1960s. John has been sidelined lately following a hip replacement and then a quadruple by-pass. We hope you are soon back on the tractor, John.

A new book on Elfins is being researched and the author is trying to locate the former owners of Elfin Sports Cars, Don Elliott and Tony Edmondson. Can anyone provide some leads? If so, please contact **BILL HEMMING** on 0408 059 002.



Elfins and Elfin owners feature prominently in the publicity for major Historic meetings coming up.

The Phillip Island Classic poster (left) for the VHRRs Festival of Motorsport (March 10-13) has a great photo of the Elfin 360 Repco Brabham owned by **STEVE WEBB**. What a car!



Meanwhile, coming up in May (28 and 29) will be the 40<sup>th</sup> Historic Winton meeting organised by the Austin 7 club and the HMRV. This poster (right) features the smiling features of club member **DAVID REID** aboard the Sulman Singer. Note the EODC badge well to the fore on his driving suit.

## 2016 AGP ELFIN BBQ

As usual, our Grand Prix barbeque will be held at the Elfin Heritage Centre, 29 Capella Crescent, Moorabbin.

Date: **Friday, March 18**

Time: **6:30pm onwards**

Cost: **Free for current financial members, \$20 per head for visitors.**

It's a great way to get into the Grand Prix spirit, enjoy master chef Arthur's culinary delights and share an opportunity to catch up with other members at this fabulous venue.

**FOR CATERING PURPOSES IT IS IMPORTANT TO LET US KNOW IF YOU ARE ATTENDING.**

Please contact **Cheryl** on **0419 581 815**, email [reidywithchampers@yahoo.com.au](mailto:reidywithchampers@yahoo.com.au) or **Brique** on 0427 395 296.

To find the Elfin Heritage Centre use Melways map 78 B7.

(From the city, turn right into Cochrane Rd. off Warrigal Rd. at Bunnings).





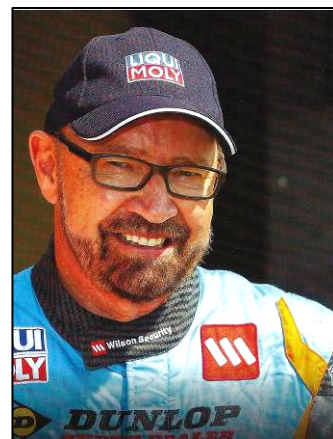
## ELFIN OWNERS and DRIVERS CLUB Inc.

### A MAJOR MILESTONE FOR EODC's JOHN BOWE....

The following article appeared in "Freestyle Rides" 2015 magazine (pp.60-61):  
LIFE & TIMES OF JOHN BOWE.

*With a record 1000 race starts and 202 race wins. John Bowe ranks as the greatest Australian circuit racer of all time.*

Sunday morning's Touring Car Masters race at the 2015 Father's Day Muscle Car Masters will go down as an historic day in Australian circuit racing history - it's where and when Liqui-Moly brand ambassador and motorsport icon, **JOHN BOWE** (at right) became the first Australian circuit racer to clock up 1000 race starts.



"It's pretty amazing", says JB. "Part of me is very proud and a part of me that thinks, geez I'm old! Mind you, I'm just as enthused as I was about 900 starts ago."

You don't get to 1000 starts (plus 202 race wins, 94 poles and 140 race lap records) by accident - it requires talent, determination and good people backing you up.

Given JB is the only Australian racer to have won seven national championships across four different categories (*see Career Highlights*), there's no doubt the boy has talent to burn. Furthermore his versatility is legendary; even fierce rival Mark Skaife conceded "Bowie can drive anything."

JB's fierce determination and unrelenting competitiveness is well known. Former team-mate and life-long friend, Dick Johnson once described JB as "harder to pass than a kidney stone."

That leaves just one piece of the puzzle, excellent support. Disregarding his lucky red undies made famous during his record 11 seasons with Dick Johnson, JB's the first to admit that having winning people and products around you is a must.

"Success in motorsport is all about the fine, little details," he says. "I have to thank people like Synergy Engines, who prep Sally, and Bendigo Retro Muscle Cars with the Torana. I get a bit embarrassed sometimes, these guys do all the work and I get all the glory. Naturally you need good products too. When you're paying the bills out of your own pocket, you quickly identify what works and what doesn't. And I've seen with my own eyes how well Liqui-Moly oils and additives look after the cars I race and my performance road cars."

JB is vocal regarding the merits of Liqui-Moly, which both he and Maranello Motorsport Managing Director, Mark Coffey credit as being a key element in their historic 2014 Bathurst 12-Hour victory. The high quality German lubricants allowed the Il Bello Rosso Ferrari 458 GT3 to be driven to its maximum potential while warding off the heat-related driveline failures that had previously plagued the team....

.... So how did JB go on his 1000<sup>th</sup> start? Over the weekend he stuck the Bendigo Retro Muscle Cars Torana on pole, won all three races, snatched the race lap record and took the round win - situation normal, much like it's been for most of his 45-year career!



**JOHN BOWE** (at left) drives his Elfin 500 Vee to victory in the 1971 Tasmanian Formula Vee Championship.



# ELFIN OWNERS and DRIVERS CLUB Inc.

## A MAJOR MILESTONE FOR EODC's JOHN BOWE continued....

### Career Highlights:

- ❖ Australian Touring Car champion 1995, (runner up 1988, '89, '96, '97)
- ❖ Touring Car Masters champion 2011, 2012, 2014 (runner up 2008, '09)
- ❖ Bathurst 12-hour winner 1995, 2010, 2014
- ❖ Bathurst 1000 winner 1989, 1994 (runner up 1987, '88, '96)
- ❖ Australian Driver's Champion (Gold Star) 1984, 1985
- ❖ Australian Sports Car champion 1986 (runner up 1987)
- ❖ Sandown 500 winner 1994, 1995
- ❖ Tasmanian Formula Vee champion 1971
- ❖ Tasmanian Formula Ford champion 1972
- ❖ Formula 5000 championship (runner up 1979, '80, '82, '83)
- ❖ Australian Grand Prix (runner up 1979), (pole position 1984).

*Congratulations, John, and may you go on to many more successes. (Ed.)*

### FACEBOOK:

For those interested in social media **MARK GOLDSMITH** and **JAMES LAMBERT** have been using Facebook as a way of sharing images and successes of Elfins of the past. There is a wealth of history contained on these sites and yet another way of sharing your memories and photos. Mark is sharing images of the major restoration of his Elfin 400 (known as the 'Globe 400'), and EODC members and other enthusiasts have used this as a way of providing Mark with valuable information relating to the car's past history. Why not join all pages! **ELFIN 60's Sportscars, Elfin Types 600 to 600E** and **Elfin Monocoque Aficionados** - devoted to the sharing of Elfin information and history. Thank you to the administrators...



### CLASSIFIEDS:

#### FOR SALE....

##### 1974 ELFIN MS7

Multiple race winner past and present with fabulous history including winner 1975 Australian Sports Car Championship (**GARRIE COOPER**) and numerous wins, places and lap records since. Lucas injected 5 litre Repco Holden 560 bhp (F5000 spec) with Hewland DG300 g'box and a load of spares neg. Monocoque aluminium tub and body with fresh engine. Includes detailed car log and all setup records etc as owner retiring. Easy to drive and maintain and all details available at [www.ibcholdings.com.au/cars/elfin/index.html](http://www.ibcholdings.com.au/cars/elfin/index.html)

**PRICE AUD \$285,000 plus spares.**

**ROBERT TWEEDIE** 0408 162 762 (daytime)

[ibcholdings@bigpond.com](mailto:ibcholdings@bigpond.com)

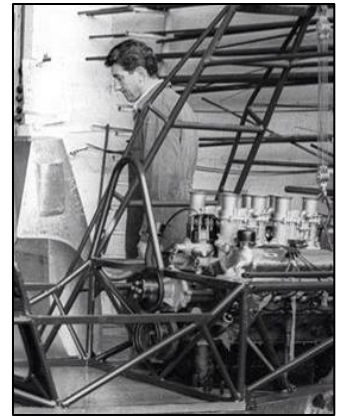
Steering wheel of the ex-**JOHN BLANDEN** Elfin Formula 5000. Best offer.  
Contact **GRAEME CLARK** on 0429 110 868.



## ELFIN OWNERS and DRIVERS CLUB Inc.

### A TRIBUTE TO FULVIO MATTIOLO:

Only a few days before his 89<sup>th</sup> birthday, we lost one of our esteemed Life Members of the EODC, **FULVIO MATTIOLO**. Fulvio had been a highly respected employee of Elfin Sports Cars, and several work colleagues and EODC members were amongst the 140 people who recently attended the celebration of his life in Adelaide. There were also several Elfins parked outside as a special tribute, no doubt cars that Fulvio had helped create during his very long time at Conmurra Ave. **BARRY CATFORD** attended the service and sent a copy of the eulogy delivered by Silvio Luksich, part of which follows.....



*Fulvio Mattiolo - also known as George to former work colleagues and the motor racing industry. We, the family called him "the Old Buggar" and Nonno. Born in Bevilacqua, a small town near Verona in Northern Italy Feb 3rd 1927. During the 2nd World War when Fulvio was 14 years old, his family moved to Bolzano in the very north of Italy near the Austrian border for work. Fulvio did his apprenticeship in a bike factory as a fitter & welder. He then worked at Lancia for seven years on the factory line assembling cars.*

*Fulvio's sister was going out with Cesira's brother, which is how Fulvio and Cesira met. They eventually married in March, 1956 in Bolzano. At the same time Fulvio had decided to leave the emotional burden of some family issues in Italy and search out a better life. Australia was decided to be the best destination to start his new life and he departed for Australia April 1956 with no English and really no idea of what Australia really was all about. He arrived in Australia 31 days later around May 1956, and was transported with other immigrants to Bonegilla migration camp, eventually being transported to Glenelg Migration Camp in Adelaide. A "fitter & welder" position was eventually found by the immigration authorities with Elfin Sports Cars. Fulvio worked for Elfin for approximately 35 years. Fulvio was quickly recognised as a valuable asset to the company and made many lifelong friends. Interestingly Fulvio learnt most of his English language whilst employed by Elfin on the factory floor, which explains a lot about some of Fulvio's English.*

*Fulvio and Cesira had two children - Carla born in 1960 and Loretta born 10 years later in 1970. Fulvio was a joker, who managed to somehow balance being the best of the best in his craft whilst also never taking life too seriously. He was known as the "King of nick names", and almost everyone he met was given a nick name.*

*Fulvio was a simple man who had an adventurous full life. His instruction to family was to keep today simple - he didn't want any fuss. He told us several times, "put me in cardboard box and throw me off the jetty!!" or "put me in cardboard box and bury me in backyard!!" Phillip and I often measured him up for his cardboard box in the kitchen during family dinners. He will be pleased as we've kept today simple and found the closest thing to a cardboard box for a coffin - plaster board, plastic handles and cheap!. Once Tony the funeral director confirmed he wouldn't fall through the bottom and the handles wouldn't fall off we knew it was perfect! Right now I'm confident he'll be laughing and calling Phillip and I "miserable Scotches!"*

*Fulvio had the god given talent of being extremely popular with family, friends and colleagues. He understood and practiced positivity, unwavering generosity, never taking life too seriously and doing his best at his craft. Fulvio loved his family dearly and his family truly loved him! Thank you.....and ciao Fulvio!*

A card was sent from the EODC in which we expressed our sincere condolences to the Mattiolo family. Thanks also to the following members who provided their Elfins for the tribute:

**GRAHAM JARRETT** (Streamliner), **MARK GOLDSMITH** (622), **RICHARD NITSCHKE** (300), **MARK SCOTT** (Clubman) and **MARK POOLE** (Formula Junior).



## ELFIN OWNERS and DRIVERS CLUB Inc.

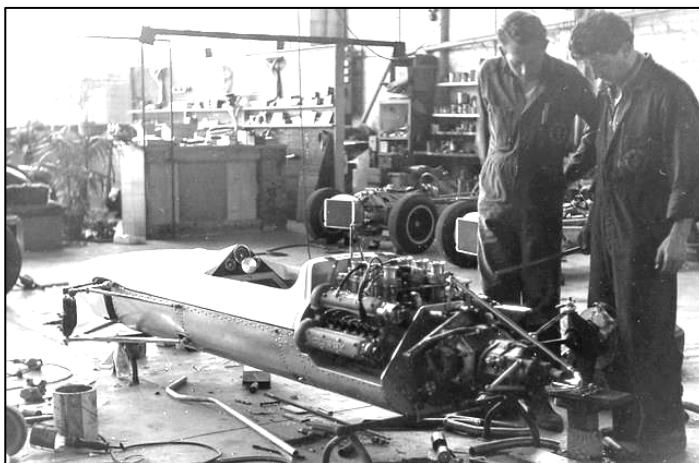
### FURTHER TRIBUTES TO FULVIO MATTIOLO:

"It is with great sadness that I must let my motor racing friends know of the passing of Fulvio (George) Mattiolo. George was involved in almost every car produced at the Elfin factory, he was a true craftsman, a master of his trade and a wonderful human. It was an honour to work with and know this motor sport legend." Mark McLaughlin - Elfin works driver.

"Fulvio was the best of the best, never has there been a more genuine gentleman. I've had the honour of knowing him for my entire life. He and his fabulous family were and are generous to a fault, and Fulvio would always have everyone around him in stitches and/or crying with laughter with some of the most laconic one liners ever delivered. Fulvio made the lives of those around him the richer for his presence. You'll be sorely missed Signore." **JAMES LAMBERT**

"George ... the true craftsmen in every sense, a gentleman with a great sense of humour. He had a major part in all five of my Elfins. The Bill Pyle mono will remain with me forever!! The hole in the roof from the chipping hammer is probably still there. There is at last a great fabricator up there. Always remembered." **MALCOLM RAMSAY**

FULVIO (right) is seen here with **GARRIE** making plans for yet another Elfin classic.



### ELFINS TO PARTICIPATE IN THE 2016 AGP CARNIVAL AT ALBERT PARK

Thanks yet again to the sterling efforts of **MIKE BARKER**, a fine cross section of Elfins has been assembled for display at this year's opening round of the Formula One season (March 17-20). Subject to some possible changes the following members have agreed to make their cars available:

**SHANE HUGHES** ( 620B FF); **BILL HEMMING** (two cars from the Elfin Heritage Centre); **MIKE BARKER** (Clubman Type 3); **JEFF BROWN** (622 F2); **GRANT GRAY** (V8 Clubman); **DAN JEFFRIES** (Streamliner); **PENRITE OILS** (Clubman); **LAURIE BENNETT** (600F2); **GEOFF VAREY** (Mono).



A special thanks to all who have participated, and to those who will act as supervisors of our display during the four days. Mike has asked you all come along in your Elfin gear (caps and shirts) to add a further professional touch.



# ELFIN OWNERS and DRIVERS CLUB Inc.

## MEMBERSHIP:

We welcome the following new members to our club:

### No. 642 - JOHN STEWARD (NSW)

As mentioned in 'Bits 'n Pieces' John hails from Silverdale, and has fond memories of the great hillclimbing days at "God's own country". He has joined the club as an "enthusiast" - who knows, maybe an "owner" one day, John?

### No. 643 - VAHAGN KHACHATRYAN (VIC)

Vahagn is the proud owner of a yellow 2007 MS8 Clubman. He purchased the car at auction in 2014 and says "I'm looking for a bit of track time for fun". First outing was at Sandown and not surprisingly said "There's a lot to learn!" He is keen to get to know other MS8 Clubman owners and plans to drive his car to the Elfin BBQ on the 18<sup>th</sup> March.

We wish our new members well and hope they have a long and happy association with the EODC.

## 2015 EODC CLUBMAN of the YEAR

There have been many great achievements to celebrate during the past year, and it's not an easy task to select someone who has stood out above the rest. However, one member has shown amazing resilience in the face of a life threatening ailment. **SHANE HUGHES'** professional career as a jazz musician and music teacher (brass) at a Melbourne secondary college was seriously interrupted when he was diagnosed with a brain tumour. After months of radical treatment he has slowly recovered, and even made a tentative return behind the wheel of his immaculate



Elfin 600 FF at the Historic Sandown meeting last November. But let's go back a bit to a time when he was fit and well. A couple of years ago the EODC was invited to display and demonstrate our cars at the Clipsal "500" meeting in Adelaide as a tribute to **GARRIE COOPER**. Shane (pictured above) came in as an 11<sup>th</sup> hour replacement when we had a cancellation, towed his 600 through the night in time to take to the track on Saturday, then drove back to Melbourne on Sunday night in time to go the school Monday morning. He displayed great club spirit when his birthday coincided with Historic Sandown the previous year and he invited as many EODC members and friends to share a birthday cake with him. During his recuperation he raced his ex-John Smith "Mr Juicy" Ralt RT4 with Jamie Larner behind the wheel, and he's currently looking for another Elfin to add to the fleet. His is a story of great courage in the face of adversity, and he owes a great debt of gratitude to Paula, his wonderfully supportive partner.

Congratulations Shane on a thoroughly deserving award - another name to add to our list of worthy winners over the years.

## CLUB MERCHANDISE:

The latest EODC polo shirts (sizes S-XXXL) and Elfin caps are now available.

Shirts are \$35, caps \$20, or \$50 the pair. (Add \$10 for postage and packaging).

Also Elfin lapel badges (\$8), cloth badges (\$8), key rings (\$12), decals (\$2).

Please send your orders to Cheryl (0419 581 815), [reidywithchampers@yahoo.com.au](mailto:reidywithchampers@yahoo.com.au)



# ELFIN OWNERS and DRIVERS CLUB Inc.

## MEMBERSHIP APPLICATION

Name (PLEASE PRINT) .....

Address .....

Postcode.....Fax No.....Mobile No .....

Phone No.....(home) .....(work)

Email.....

I am an owner/ex-owner/entrant/driver/mechanic/enthusiast of Elfin cars. (Please circle)

CAR.....YEAR OF MANUFACTURE.....

CATEGORY.....CAPACITY.....

ENGINE.....ENGINE NO.....

CHASSIS NO.....COLOUR.....

Any other significant mechanical details?

### - HISTORY OF CAR -

EVENTS CONTESTED (include results and dates)

PREVIOUS OWNERS (and years)

◆◆◆ Please include a photograph of your car ◆◆◆

I wish to become a member of the Elfin Owners and Drivers Club, and

☐ have enclosed a cheque for \$25 - membership fee (no cash please).

☐ have paid my membership via direct credit -

Bank A/C No. 5003785 BSB 633-000 (Bendigo & Adelaide Bank)

Signed .....

Please return to Brian Reed  
Box 447  
AIREYS INLET 3231

or email [brianreed.motorsport@yahoo.com.au](mailto:brianreed.motorsport@yahoo.com.au)

**ELFIN OWNERS & DRIVERS CLUB NEWSLETTER**

Print Post Publication No. PP 326764/00034

If undeliverable, return to:

**Brian Reed**

**Box 447**

**AIREYS INLET 3231**

**SURFACE  
MAIL**

POSTAGE  
PAID  
AUSTRALIA